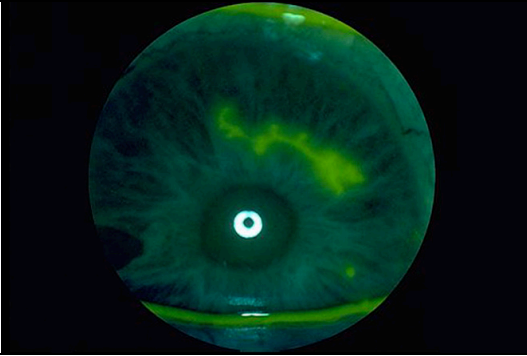


What is the diagnosis?
How would you treat it?
2 points



What is the diagnosis?
2 points



This patient presented to the department with altered vision in one eye. A few days before he had noticed a sudden onset of black specks in front of that eye that seemed to settle but now he keeps seeing cobwebs in front of his eye and they not getting better by rubbing. What is the diagnosis?
What are the worrying features in the history?
3 points



What is this condition called?
1 point

