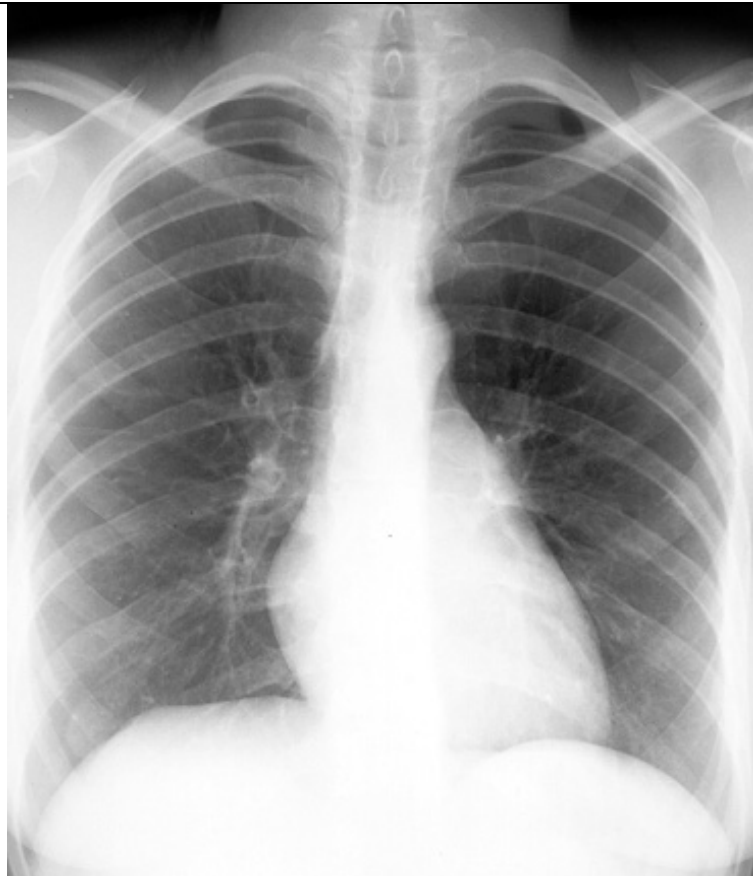


Your SHO comes over to ask you to assist him with chest drain insertion. He has a 25 year old man with acute chest pain since yesterday, no history of trauma and a pneumothorax on his X-ray.

List 6 indications for chest drain insertion? 3 points

What are the A&E treatment options for such a patient? 3 points

This is the pt CXr. What would you tell the SHO? 2 points



What advice would you give to pt discharged after a diagnosis of a spontaneous pneumothorax? 2 points