

A young man is brought into your department. He had been assaulted and has sustained the following injury

What two important structures are likely to be damaged in this picture? 2 points
How would you go about repairing this wound? 1 point

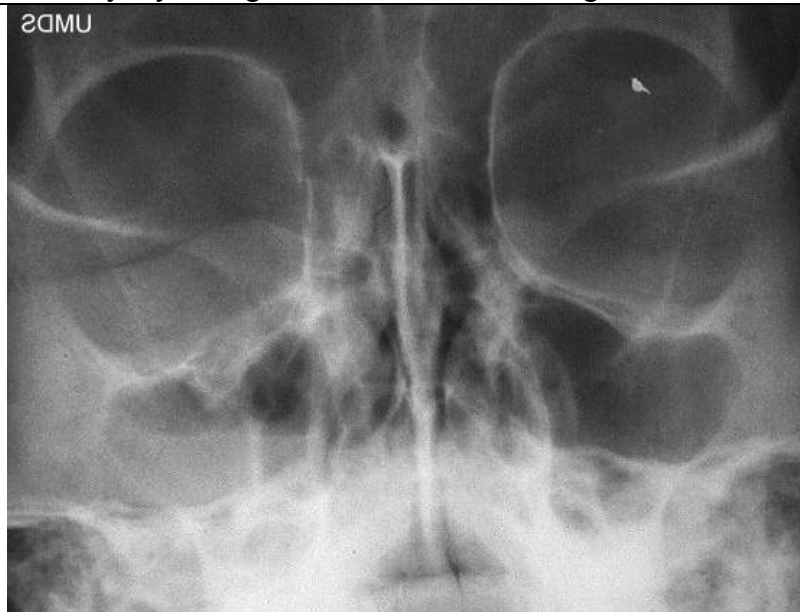


Lacrimal duct and tarsal plate are likely to be damaged
Do not repair-wet dressing and refer plastics/ophthalmology

You suspect he might have sustained damage to his cornea and are concerned about a penetrating injury. How would you investigate that and what must you never do while examining such an eye and why? 2 points

Methods- stain washout: fluorescein gets washed away on examination
Anterior chamber thickness- shine light from side if does not illuminate the whole of iris it suggests a shallow chamber= penetration
/ You should never press on the eye- you might cause more fluid leakage

He keeps complaining of pain around the eye and on examination does not seem to be able to look upwards.
You X-rayed the man's face. List 3 abnormalities on this X-ray.



Fracture R medial orbital wall
Fracture R orbital floor
Fluid in the R maxillary sinus
? FB L orbit for extra mark

List 2 indications for orbital blow out repair. 2points

Persistent diplopia in a functional field of gaze
> 50% floor involved
enophthalmos > 2mm