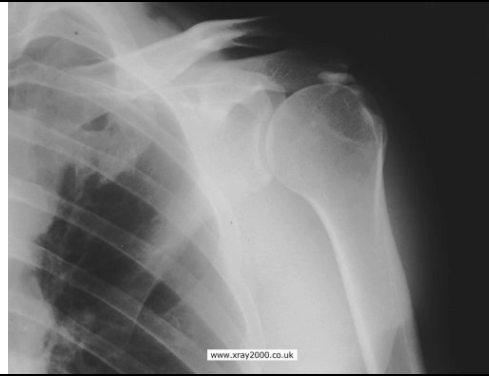


Pt presented with a sore shoulder. What is the diagnosis?- 1 point
What syndrome might you elicit on examination and what is the syndrome? 2 points
What would be the initial treatment. 1 point



A 55 year old man comes in to the department c/o hand pain. It has been bothering him for a while but seemed to get worse today. It mainly seemed to bother him at night and has been affecting the palm of his hand and the middle 3 digits. Now it is also hurting his forearm. What is the likely diagnosis? 1 point
Name a sign you could elicit in A&E to “help” with the diagnosis and describe it. 1 points

What might you find on examination which would confirm your suspicion. 2 points

How would you treat it initially? 2 points